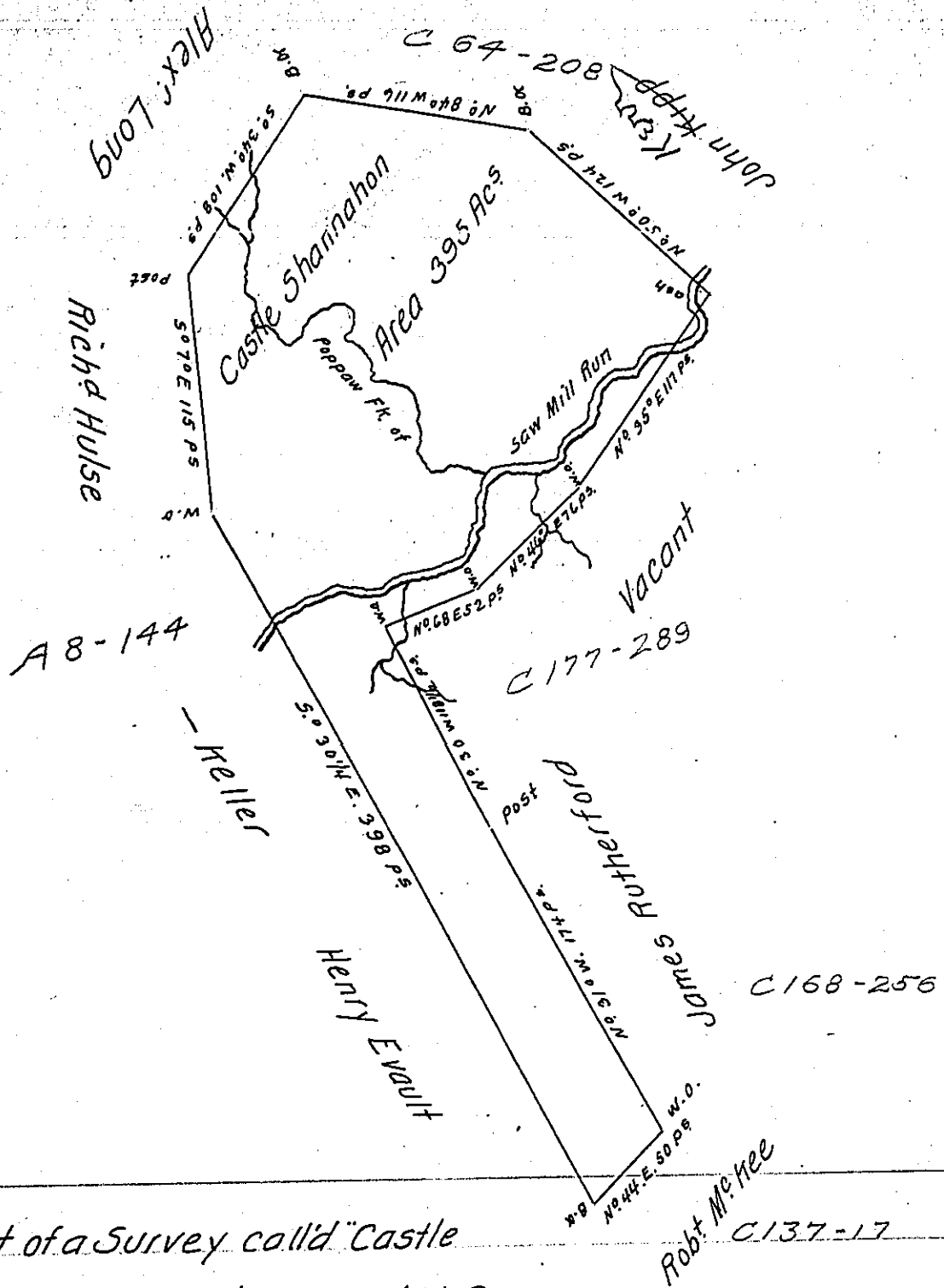


261  
P-8-108  
3-180



A Draught of a Survey call'd "Castle Shannahan" lying on the Saw Mill Run in Washington County. cont<sup>g</sup> 395 Ac.<sup>s</sup> strict Measure, executed Sept<sup>r</sup> ye 3<sup>d</sup> 1786. in Consequence of a Certif<sup>e</sup> for 400 Ac.<sup>s</sup> granted to David Strawbridge by the Commis<sup>rs</sup> appointed by Virg<sup>a</sup> to adjust the Claims to unpatented - in ye Counties Monong<sup>a</sup>. Yohg<sup>a</sup> & Ohio and duly entered with the County Surv. as appears from the authenticated List of Entries. Ret<sup>d</sup> 4<sup>th</sup> Dec<sup>r</sup> - 86. Entry f<sup>d</sup> to be made the 26<sup>th</sup> of Ap<sup>l</sup> 1780.

Jn<sup>o</sup> Lukens Esq<sup>r</sup> S. Gen<sup>l</sup> }  
 Presley Nevill } D. S.  
 Matt<sup>w</sup> Ritchie }

IN TESTIMONY that the above is a copy of the original remaining on file in the Department of Internal Affairs of Pennsylvania, made conformably to an Act of Assembly approved the 16th day of February, 1833, I have hereunto set my Hand and caused the Seal of said Department to be affixed at Harrisburg, this seventh day of December 1906.

Isaac B. Brown  
 Secretary of Internal Affairs.